

Earl May's Guide to FURNITURE & ACCESSORIES



Patio Essentials

- + Cast Aluminum Dining
- + Deep Seating
- + Amish furniture
- + Fire Pits
- + Patio Umbrellas
- + Cushions & Throw Pillows
- + Warranties



STORE COPY



INDEX



Dining Sets

Cast Aluminum by Hanamint:

Bella Dining Group	pg. 2-3
Scarsdale Dining Group	pg. 4
Westfield Dining Group	pg. 4
Lakeside Dining Group	pg. 5
Stratford Dining Group	pg. 6-7
Catalina Dining Group	pg. 8
Pinecrest Dining Group	pg. 9
Florence Dining Group	pg. 10
Classic Dover Dining Group	pg. 11

Cast Aluminum by Kingston Casual:

Portside Dining Group	pg. 12
-----------------------	--------

Chat Group

Grey Banded Seating Group	pg. 13
Aged Timber Deep Seating	pg. 14
Hudson Deep Seating	pg. 15

Modern Adirondack

Modern Adirondack Chairs	pg. 16
Modern Accents	pg. 17

Amish Furniture

pg. 18-21

Accessories

pg. 22-23

Umbrellas

pg. 24-25

Cushions & Pillows

pg. 26-27

Warranties

pg. 28-33

Bella Dining



Bella Dining Set
Frame Finish: Golden Bronze



Bella

7 PIECE SET

SALE...\$3479

you SAVE \$614 502 PLU

LIST PRICE...\$4093

Includes:

60" Round Lazy Susan Table
IBM 431309

6 Arm Chairs IBM 440372

7 PIECE SET

SALE...\$4499

you SAVE \$794 502 PLU

LIST PRICE...\$5293

Includes:

60" Round Lazy Susan Table
IBM 431309

6 Swivel Rockers IBM 431282



SALE...\$2545

you SAVE \$450 502 PLU

LIST PRICE...\$2995

Five Piece Set Includes:

48" Round Table IBM 431291

2 Arm Chairs IBM 440372

2 Swivel Rockers IBM 431282



SALE...\$2200

you SAVE \$395 502 PLU

LIST PRICE...\$2595

Five Piece Set Includes:

48" Round Table IBM 431291

4 Arm Chairs IBM 440372



SALE...\$2885

you SAVE \$510 502 PLU

LIST PRICE...\$3395

Five Piece Set Includes:

48" Round Table IBM 431291

4 Swivel Rockers IBM 431282



Scarsdale

SALE...\$3495

you SAVE \$600 502 PLU

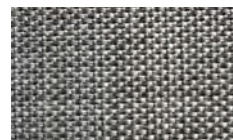
LIST PRICE...\$4095

Five Piece Set Includes:

48" Round Slat Table IBM 402654

4 Sling Swivel Rockers IBM 402653

Frame Finish: Meteor
Sling Color: Augustine Pewter



Augustine Pewter



Westfield counter height

SALE...\$2995

you SAVE \$600 502 PLU

LIST PRICE...\$3595

Five Piece Set Includes:

36" Square Counter Height Slat Table IBM 400588

4 Swivel Counter Height Stools IBM 400589



Frame Finish: Terra Mist



CAST ALUMINUM LAKESIDE DINING SET BY HANAMINT

SALE...\$2995

you SAVE \$600 502 PLU

LIST PRICE...\$3595

Five Piece Set Includes:

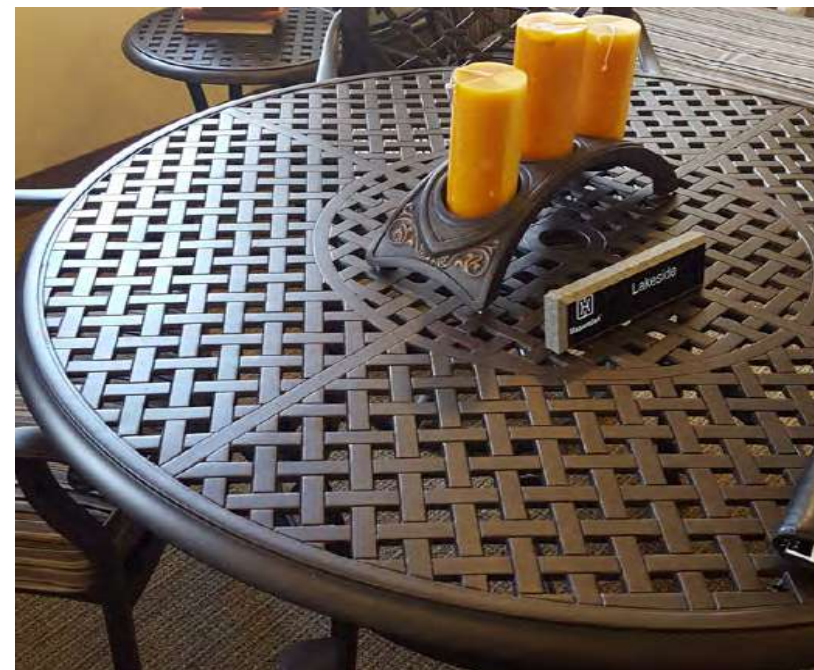
48" Round Dining Table

IBM 402120

4 Swivel Rockers

IBM 402121

Frame Finish: Venetian Grey



Stratford



SALE...\$2995

you SAVE \$600 502 PLU

LIST PRICE...\$3595

Five Piece Set Includes:

36" Square Slat Table

IBM 400489

4 Swivel Rockers IBM 435611



SALE...\$3800

you SAVE \$691 502 PLU

LIST PRICE...\$4491

Five Piece Set Includes:

44" x 84" Slat Table

IBM 435620

2 Swivel Rockers IBM 435611

2 Slat Benches IBM 435639



SALE...\$4400

you SAVE \$790 502 PLU

LIST PRICE...\$5190

Six Piece Set Includes:

44" x 84" Slat Table IBM 435620

4 Swivel Rockers IBM 435611

1 Slat Bench IBM 435639



SALE...\$5000

you SAVE \$889 502 PLU

LIST PRICE...\$5889

Seven Piece Set Includes:

44" x 84" Slat Table IBM 435620

6 Swivel Rockers IBM 435611

Frame Finish: Terra Mist



Frame Finish: Terra Mist

Stratford

SALE...\$1445

you SAVE \$252 502 PLU

LIST PRICE...\$1697

Three Piece Set Includes:

22" x 28" Rectangle

Counter Height Table IBM 403612

2 Counter Height Stools IBM 402651



SALE...\$4695

you SAVE \$897 502 PLU

LIST PRICE...\$5593

Seven Piece Set Includes:

39" x 69" Rectangle

Slat Table IBM 401570

6 Sling Swivel Rockers

IBM 403613

Frame Finish: Black



36" Square Table IBM 400489



Slat Bench IBM 435639

Catalina



SALE...\$3895

you SAVE \$700 502 PLU

LIST PRICE...\$4595

Five Piece Set Includes:

48" Round Table

IBM 402649

4 Sling Swivel Rockers

IBM 402648

SHANGRILA



SALE...\$5595

you SAVE \$998 502 PLU

LIST PRICE...\$6593

Seven Piece Set Includes:

36" x 62" Rectangle Table

IBM 402650

6 Sling Swivel Rockers

IBM 402648

SHANGRILA



SALE...\$3895

you SAVE \$700 502 PLU

LIST PRICE...\$4595

Five Piece Set Includes:

48" Round Table

IBM 402649

4 Sling Swivel Rockers

IBM 403559

FENNEL



SALE...\$5795

you SAVE \$1098 502 PLU

LIST PRICE...\$6893

Seven Piece Set Includes:

42" x 72" Rectangle Table

IBM 403592

6 Sling Swivel Rockers

IBM 403559

FENNEL



Shangrila Swivel Rocker



Fennel Swivel Rocker



Frame Finish: Meteor



CAST ALUMINUM PINECREST DINING SET BY HANAMINT

SALE...\$3735

you SAVE \$660 502 PLU

LIST PRICE...\$4395

Five Piece Set Includes:

54" Round Lazy Susan Table

IBM 401571

4 Swivel Rockers

IBM 401572

Frame Finish: Golden Bronze



Pinecrest

Florence



CAST ALUMINUM
**FLORENCE
DINING SET**
BY HANAMINT



SALE...\$2995

you SAVE \$600 502 PLU
LIST PRICE...\$3595

Five Piece Set Includes:

48" Round Table
IBM 403609

4 Swivel Rockers
IBM 403606



SALE...\$4595

you SAVE \$898 502 PLU
LIST PRICE...\$5493

Seven Piece Set Includes:

42" x 84" Oval Table
IBM 403608

6 Swivel Rockers
IBM 403606



Frame Finish: Alloy



Classic Dover



CAST ALUMINUM
**CLASSIC DOVER
COUNTER HEIGHT
DINING SET**
BY HANAMINT

SALE...\$2895

you SAVE \$700 502 PLU
LIST PRICE...\$3595

Five Piece Set Includes:

42" Round Counter Height Table IBM 403610

4 Counter Height Swivel Stools IBM 403611



Frame Finish: Alloy



Portside



CAST ALUMINUM PORTSIDE WICKER DINING SET BY KINGSTON CASUAL

SALE...\$2470

you SAVE \$825 502 PLU

LIST PRICE...\$3295

Five Piece Set Includes:

48" Round Slat Table

IBM 403600

4 Wicker Swivel Rockers

IBM 403599

SALE...\$3795

you SAVE \$1298 502 PLU

LIST PRICE...\$5093

Seven Piece Set Includes:

60" Hexagon Slat Table

IBM 403601

6 Wicker Swivel Rockers

IBM 403599



Hexagon Slat Table



Frame Finish: Grey



Wicker Swivel Rocker



Java Sling Swivel Rocker



Round Slat Table



CAST ALUMINUM PORTSIDE SLING DINING SET BY KINGSTON CASUAL

SALE...\$1995

you SAVE \$700 502 PLU

LIST PRICE...\$2695

Five Piece Set Includes:

48" Round Slat Table

IBM 403603

4 Sling Swivel Rockers

IBM 403602

Frame Finish: Java

Chat Group



Grey Banded Seating Group



GREY BANDED SEATING GROUP

4 Piece Set

IBM 403217

\$899

Includes:

- 2 Wicker Chairs w/ Cushion
- Loveseat w/ Cushion
- Glass Top Coffee Table

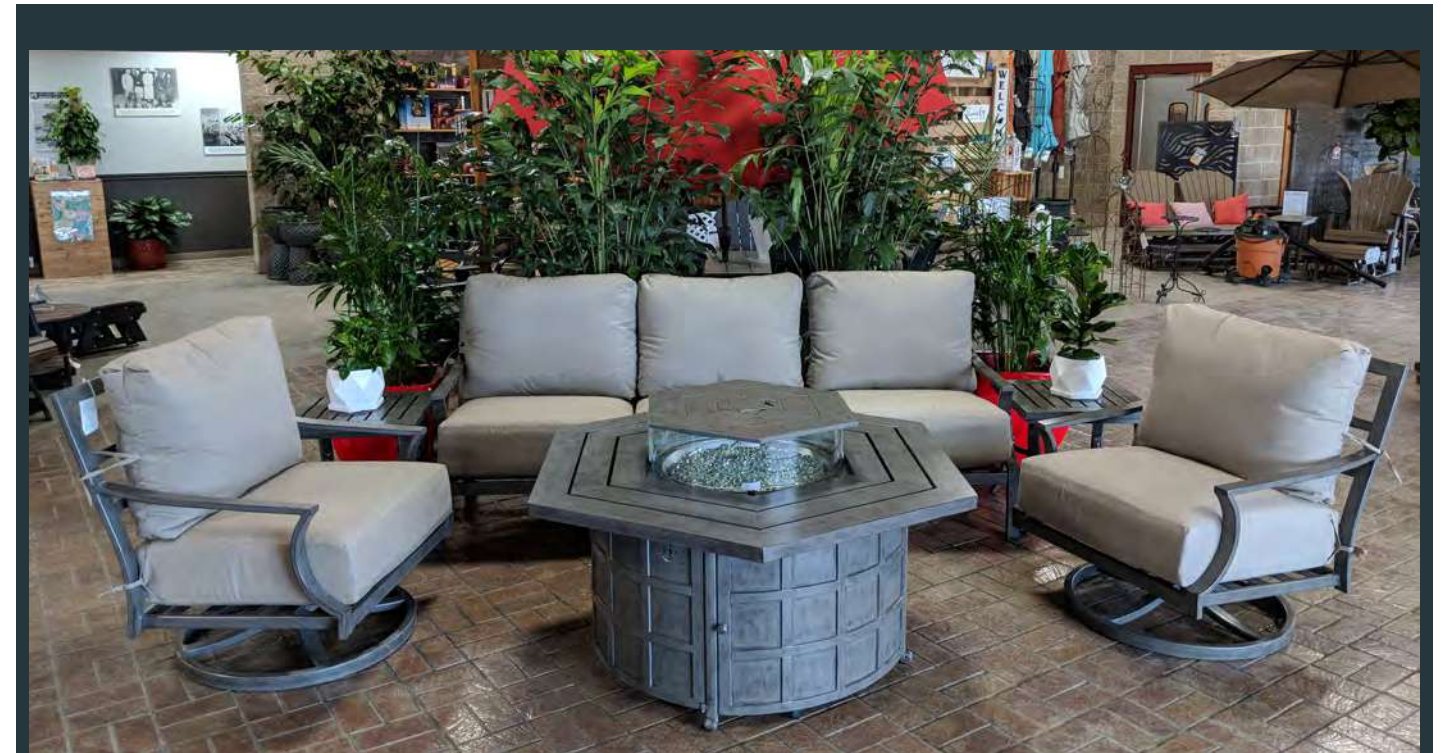




CAST ALUMINUM
AGED TIMBER
DEEP SEATING
 BY HANAMINT

- Loveseat w/ Cushion **\$1095**
IBM 401107
- Club Swivel Chair w/ Cushion **\$995**
IBM 401108
- Slat Top End Table **\$299**
IBM 401109
- Sofa w/ Cushion **\$1895**
IBM 401106
- Slat Top Gas Fire Table 39"x56" **\$1999**
IBM 401100 w/ glass wind guard

Frame Finish: Aged Timber



Frame Finish: Venetian Grey



CAST ALUMINUM
HUDSON
DEEP SEATING
 BY HANAMINT

- Club Swivel Chair w/ Cushion **\$995**
IBM 403195
- Slat Top End Table **\$299**
IBM 403197
- Sofa w/ Cushion **\$2595**
IBM 403196
- Hexagon Gas Fire Table **\$1995**
IBM 403194 / glass wind guard

Frame Finish: Venetian Grey

Modern Adirondack

FOLDING CHAIR

30" x 31" x 36"

Black - IBM 403833

Coastal Grey/ Sandstone - IBM 403835

\$699

- Modern look to a classic design
- Made from poly lumber & stainless steel fasteners
- Will not crack, split or fade under normal residential use
- 20 Year limited manufacturers warranty



Black - IBM 403833



Coastal Grey/ Sandstone - IBM 403835

Modern Accents



Black - IBM 403834



Coastal Grey/ Sandstone - IBM 403836



SIDE TABLE

23" x 18" x 22"

Black - IBM 403834

Coastal Grey/ Sandstone - IBM 403836

\$319

- Modern, clean look
- Pair with Adirondack chairs
- Made from poly lumber & stainless steel fasteners
- Will not crack, split or fade under normal residential use
- 20 Year limited manufacturers warranty



HANDCRAFTED
AMISH FURNITURE
MADE IN IOWA • BUILT FOR LIFE

4' Glider Bench

400606 Chocolate Brown
400035 Black/Slate Grey
400543 Black/Chocolate Brown
433000 Chocolate/Weathered Wood

Folding Adirondack Chair

400544 Black/Chocolate Brown 400607 Chocolate Brown
400036 Black/Slate Grey 433019 Chocolate/Weathered Wood

Adirondack Rocking Chair

400609 Black/Chocolate Brown
400187 Chocolate Brown/Weathered Wood
436377 Chocolate Brown
401420 Black/Slate Grey

Accent Side Table

400608 Chocolate Brown
400545 Black/Chocolate Brown
400037 Black/Slate Grey
433028 Chocolate/Weathered Wood

2' Gliding Adirondack

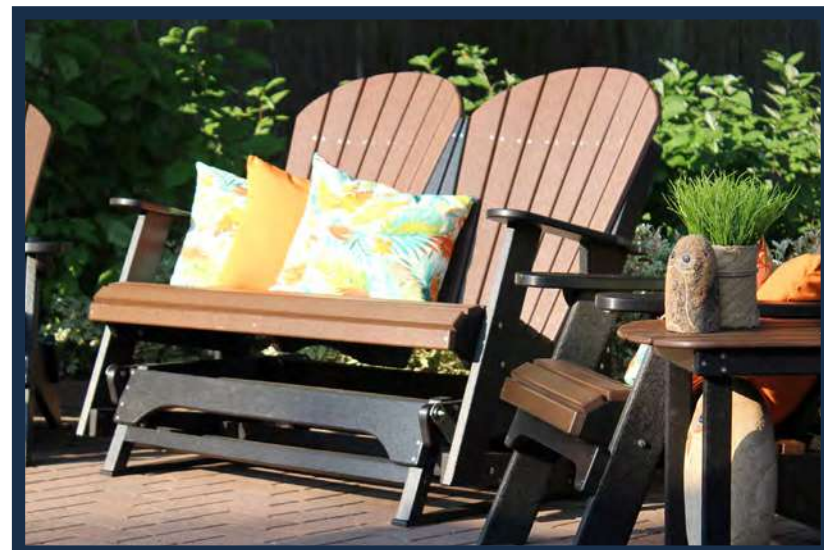
402151 Black/Slate Grey
401046 Chocolate Brown/Weathered Wood
402153 Black/Chocolate Brown

Gliding Ottoman

402152 Black/Slate Grey
401047 Chocolate Brown/Weathered Wood
402154 Black/Chocolate Brown

28" Round Coffee Table

401607 Black/Slate Grey
401641 Chocolate Brown/Weathered Wood
401642 Black/Chocolate Brown



**Additional designs and colors available for special order
see associate for details**



HANDCRAFTED AMISH FURNITURE

**42" ROUND
DINING SETS**

Made In Iowa • Built To Last



HANDCRAFTED AMISH FURNITURE

**40" X 75" OVAL
DINING SETS**

Made In Iowa • Built To Last



**AVAILABLE
COLORS & STYLES**

42" Round Table

Black/Chocolate Brown - IBM 401158
Black Slate Grey - IBM 402147
Chocolate Brn/Wthrd Wood - IBM 401155

Dining Chairs

Black/Chocolate Brown - IBM 401161
Chocolate Brn/Wthrd Wood - IBM 401157
Black /Slate Grey - IBM 402149

Dining Swivel Rocker

Black/Chocolate Brown - IBM 401227
Chocolate Brn/Wthrd Wood - IBM 401226
Black/Slate Grey - IBM 402150

**42" Round Standard Counter
Height Table w/ Foot Rest**

Black/Chocolate Brown - IBM 404592
Black/Slate Grey - IBM 404594

**Standard Counter Height
Swivel Stool**

Black/Chocolate Brown - IBM 404593
Black/Slate Grey - IBM 404595

40" X 75" Oval Table

Black/Chocolate Brown - IBM 401160
Black/Slate Grey - IBM 402148
Chocolate Brn/Wthrd Wood - IBM 401156

Dining Chairs

Black/Chocolate Brown - IBM 401161
Black/Slate Grey - IBM 402149
Chocolate Brn/Wthrd Wood - IBM 401157

Dining Swivel Rocker

Black/Chocolate Brown - IBM 401227
Black/Slate Grey - IBM 402150
Chocolate Brn/Wthrd Wood - IBM 401226

Handcrafted Amish Furniture

Our handcrafted furniture is made in Eastern Iowa by an Amish family, exclusively for Earl May. This comfortable and stylish outdoor furniture is constructed of solid composite poly. Composite poly is eco-friendly and is made from 20% recycled materials. This furniture is low maintenance and will not splinter, crack, chip or rot. Cleaning is easy, just a mild soap and warm water.

Earl May will stand behind our handcrafted Amish Furniture for 10 years, with proof of purchase. We will repair or replace as a result of defects in material or workmanship. Not applicable to normal wear and tear or damage caused from acts of Nature.



- Made from solid composite poly
- Poly made from 20% recycled materials
- Uses soap & water for cleaning

Available Colors:

- Black
- Light Grey
- Cherry Red
- Slate Grey
- Cedar
- Hunter Green
- Weathered Wood
- Chocolate Brown
- Bright Red
- White
- Yellow
- Orange
- Royal Blue
- Aruba Blue
- Patriot Blue
- Lime Green



Dining



Everyday



Amish Furniture

Accessories

Westfield Bench...\$399

Black...IBM 401099

Length 48"



Wicker Hanging Egg chair...\$479

IBM 403216



Garden Bench...\$279

Slat Black...IBM 402992

Length 50"



Tree Garden Bench...\$279

Black...IBM 402994

Length 50"



Accessories

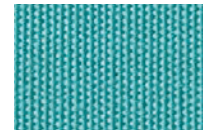
Brooks Fire Table.....\$1499

With Glass Guard...IBM 402985

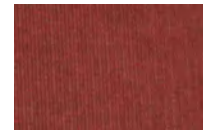
- Easy-to-maintain taupe composite decking top and base
- Gaphite grey powder-coated aluminum framing
- Elevated 12 x 24" stainless steel burner - 55,000 BTUs
- Grey burner cover included
- Access door conceals standard 20lb. propane tank in base (not included)
- UL listed
- Glass guard (included) recommended for use on products with composite material
- 50" x 30.75" x 21"
- Protective cover sold separately for \$65 (IBM# 402989)



Umbrellas



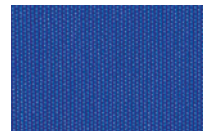
Aqua
9' Market Umbrella...\$295
 IBM 401587
 Fabric Grade C • Black Frame



Henna Red
9' Market Umbrella...\$235
 IBM 415550
 Fabric Grade D • Bronze Frame



Yellow
9' Market Umbrella...\$235
 IBM 401580
 Fabric Grade D • Black Frame



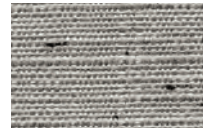
Cobalt Blue
9' Market Umbrella...\$295
 IBM 430526
 Fabric Grade C • Bronze Frame



Red
9' Market Umbrella...\$235
 IBM 401087
 Fabric Grade D • Bronze Frame



Pottery Orange
9' Market Umbrella...\$235
 IBM 415587
 Fabric Grade D • Bronze Frame



Silver Linen
9' Market Umbrella...\$295
 IBM 401579
 Fabric Grade C • Black Frame



Black
9' Market Umbrella...\$235
 IBM 401588
 Fabric Grade D • Black Frame



Kiwi
9' Market Umbrella...\$295
 IBM 420626
 Fabric Grade C • Bronze Frame

Umbrella Accessories

**32" Bottom Pole
 ...\$24.99**

Bronze IBM 427755
 Black IBM 402538



**Coronado Umbrella
 Base...\$265**

Terre Mist 50 Lb. IBM 403205



**Alumiron Umbrella
 Base...\$285**

Black IBM 403593
 Ant. Bronze IBM 403594
 50 lb



**36" Bottom Pole
 ...\$35**

For Counter Height
 Bronze IBM 403501
 Black IBM 403500



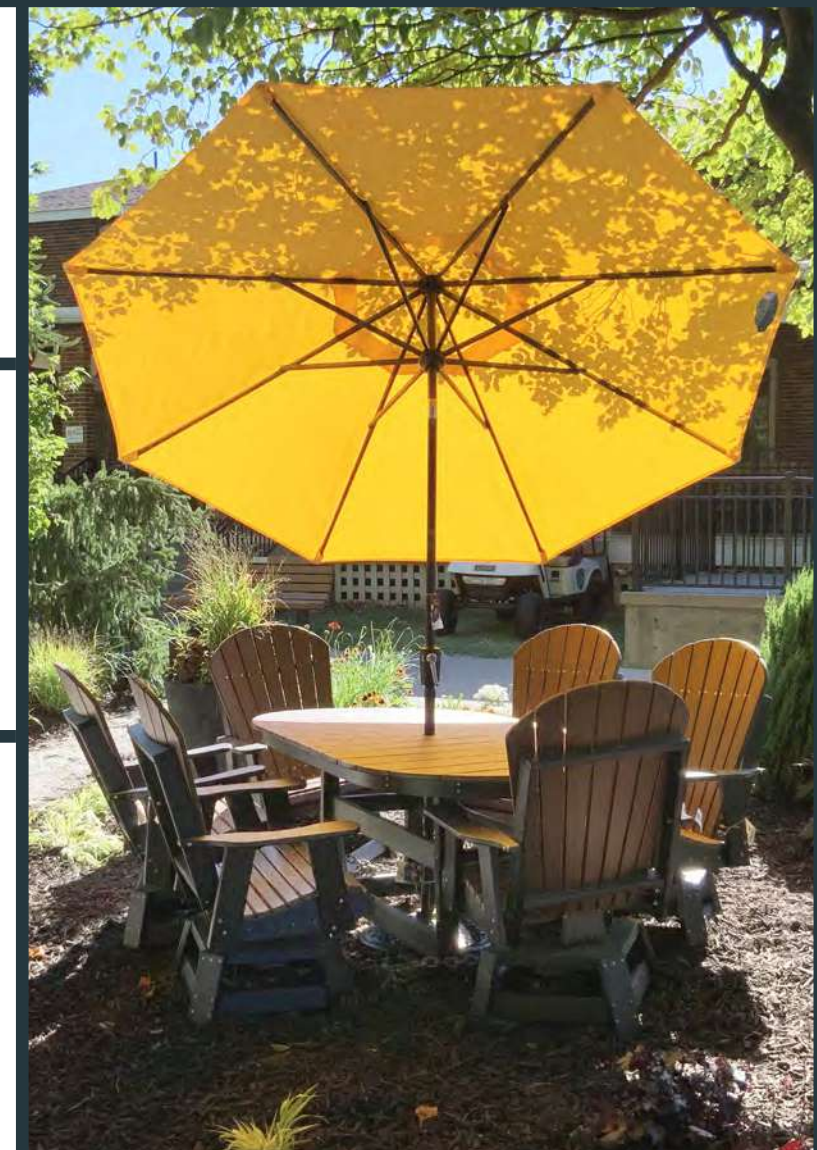
**Add On Umbrella
 Base Weight...\$95**

30lb Base Weight IBM 403598



**50 Lb. Umbrella
 Base...\$235**

Black IBM 420662
 Bronze IBM 429483



Cushions & Throwpillows



Red
Bench Cushion...\$64.00
IBM 404227



Red Pin Dot
Seat Cushion...\$39.99
IBM 403567 / Fabric Grade C



Natural Geometric
Seat Cushion...\$39.99
IBM 403570 / Fabric Grade C



Blue/Green Check
Seat Cushion...\$39.99
IBM 403569 / Fabric Grade C



Pellyn Silver Frost
Seat Cushion...\$34.99
IBM 403190 Fabric Grade A



Grey Stone White Stripe
Bench Cushion...\$75.00
IBM 404230
Seat Cushion...\$45.00
IBM 404234 / Fabric Grade A



Grey Fleck
Bench Cushion...\$75.00
IBM 404229
Seat Cushion...\$45.00
IBM 404233 / Fabric Grade A



Teal Pin Dot
Seat Cushion...\$39.99
IBM 403567 / Fabric Grade C



Cool Blue Stripe
Bench Cushion...\$75.00
IBM 404232 / Fabric Grade A



Beachcrest
Seat Cushion...\$45.00
IBM 404235 / Fabric Grade A



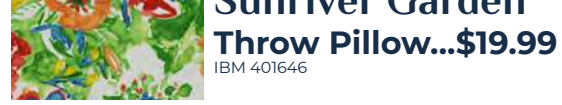
Ombre Lagoon
Seat Cushion...\$34.99
IBM 403192 Fabric Grade A



Sainbury Oceania
Bench Cushion...\$64.00
IBM 403193 Fabric Grade A



Sunriver Garden
Bench Cushion...\$75.00
IBM 404231
Seat Cushion...\$45.00
IBM 404236 / Fabric Grade A



Sunriver Garden
Throw Pillow...\$19.99
IBM 401646



Green/Red/Blue Tile
Throw Pillow...\$22.00
IBM 404586



Blooms Green Blue
Throw Pillow...\$22.00
IBM 404587



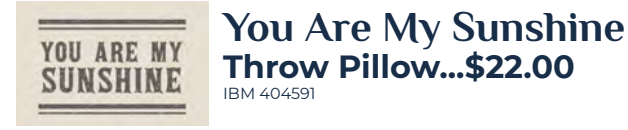
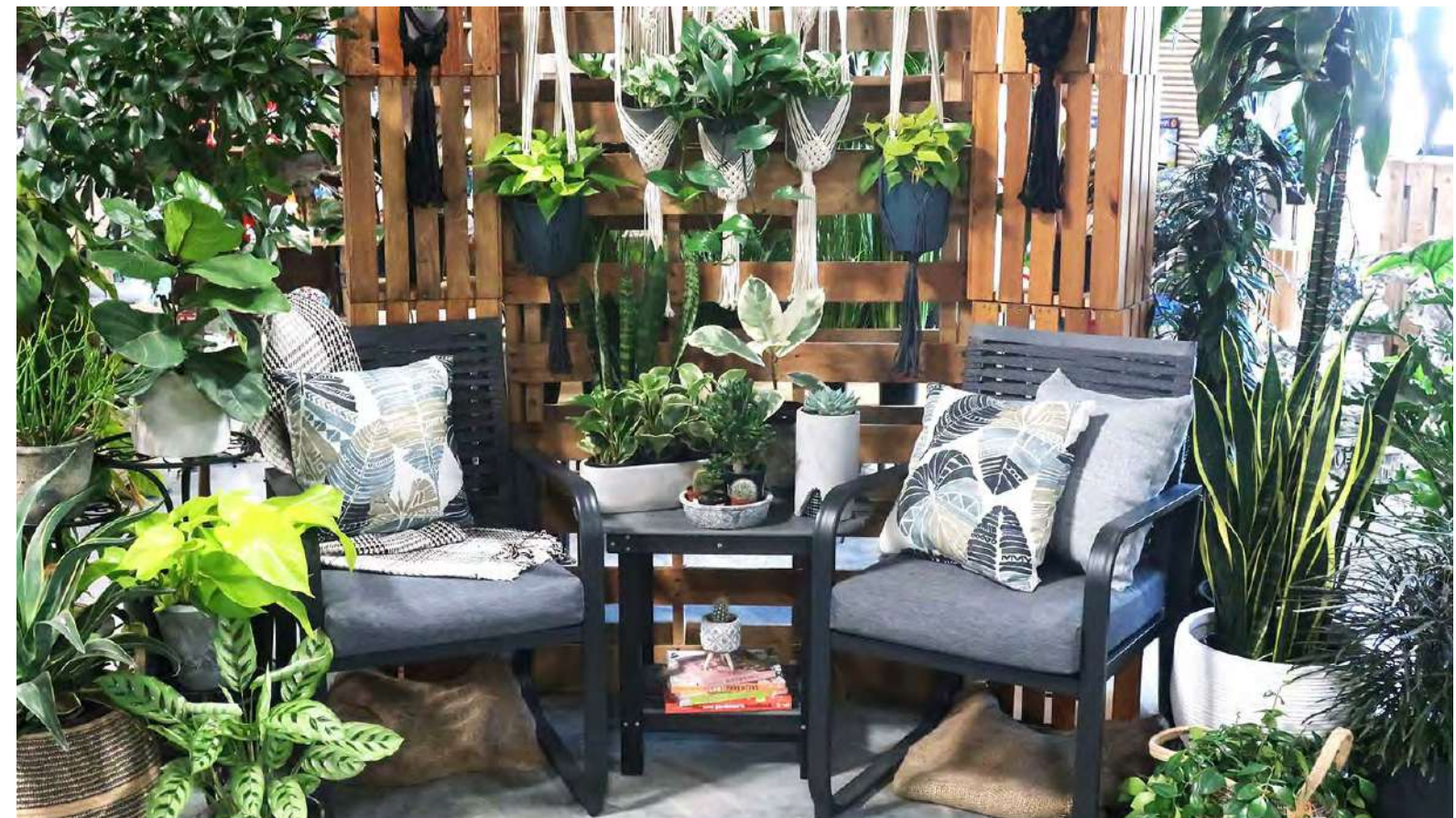
Tearose
Throw Pillow...\$22.00
IBM 404588



Suntan
Throw Pillow...\$22.00
IBM 404589



Mushroom Medley
Throw Pillow...\$22.00
IBM 404590



You Are My Sunshine
Throw Pillow...\$22.00
IBM 404591



Grey Fleck
Throw Pillow...\$19.99
IBM 402741



Black/Grey Feather Leaf
Throw Pillow...\$19.99
IBM 402742



Turquoise
Throw Pillow...\$19.99
IBM 401647



Beachcrest
Throw Pillow...\$19.99
IBM 402257



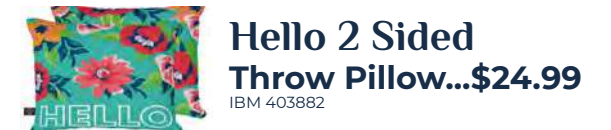
Cool Blue Stripe
Throw Pillow...\$19.99
IBM 402256



Cobalt
Throw Pillow...\$19.99
IBM 401648



Americana Wreath 2 Sided
Throw Pillow...\$24.99
IBM 404709



Hello 2 Sided
Throw Pillow...\$24.99
IBM 403882



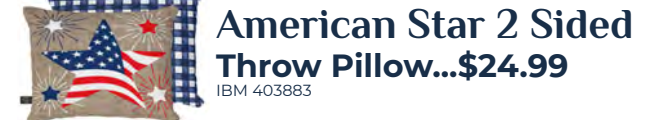
Life Is Good 2 Sided
Throw Pillow...\$24.99
IBM 403881



Whimsical Bird 2 Sided
Throw Pillow...\$24.99
IBM 404710



Red Cactus
Throw Pillow...\$19.99
IBM 402740



American Star 2 Sided
Throw Pillow...\$24.99
IBM 403883



Home Plaid 2 Sided
Throw Pillow...\$24.99
IBM 403880

Seat Cushions 20"W x 18"D x 2" | Bench Cushions 39.5"W x 18.5"D x 2" | Throw Pillows 16"

Warranties

HANAMINT
TREASURE GARDEN
KINGSTON CASUAL
PERFECT CHOICE



Catalina Fennel Five Piece Set

Hanamint Warranty Information

10 Year Limited Warranty

Product purchased prior to Sept. 1, 2008 the limited warranty is (5) years from date of purchase.

For new Hanamint branded products sold at retail after Sept. 1, 2008, Hanamint Corporation Inc warrants to the original retail buyer that in the event the furniture frame fails structurally, other than as a result of abuse or improper use, within ten (10) years form date of purchase, Hanamint will, at its sole option, replace the part, repair the frame, or replace entire item. Replacement will be in the original color and style whenever possible; however, equal value replacement will be offered in the event of product or color unavailability. In the event a defective item replaced by Hanamint, the warranty period for the replacement piece shall run from the date of purchase of the original item. Hanamint warrants the powder coat finish against peeling and blistering (but not against fading and wear, as these may be expected due to the nature of hand-applied finishes) for three (3) years from date of purchase. Some aspects of the Hanamint finishes are hand-applied and some variation in these finishes must be expected and is normal; normal variations in finishes shall not be considered defects and are not covered under this limited warranty. Warranty period is one (1) year for cushions, sling fabrics and fire pit accessories (bowls, screen covers, grates and pokers). This limited warranty does not cover damage to fire pits due to excessive heat. This limited warranty applies to residential use only and to only the original retail purchaser of the product and is not transferable. This limited warranty does not apply to products are sold "as is" or without warranty (whether or not labeled as such), nor to products sold under terms, e.g., "all sales final" or similar language, that do not allow returns or refunds by the retail buyer to the retail seller. Hanamint does not warrant against acts of nature, commercial use, normal wear and tear, chipping, fading, exposure to harsh chemicals or solvents, abuse, freeze damage, glass breakage, or failure to take reasonable care of the furniture. Hanamint shall not be liable for transit damage to the retail buyer's location. If requested by Hanamint, goods must be returned for inspection or a photograph provided to Hanamint Corporation, Inc. or its authorized representative, when requesting parts, replacement, or repair. Hanamint shall not be liable for shipping charges either to or from its warehouse on merchandise returned after 12 months from the date of purchase.

Obtaining Warranty Service: To obtain warranty service please contact the retailer where the furniture was originally purchased within the relevant warranty period and provide a copy of your dated register receipt as proof of purchase. All warranty issues must be handled through the retailer where the furniture was originally purchased. Original proof of purchase must accompany all warranty claims.

This warranty is the exclusive statement of your rights with respect to the defects in the items you have purchased and supersedes any other express warranty or statement, written or oral, made in connection with the purchase and sale of such item. Some states do not allow exclusion or limitation of incidental or consequential damages, so that limitation may not apply to you. This warranty gives you specific legal rights and you may have other rights which vary from state to state.

Warranty/Guarantee

Treasure Garden items are designed for residential use and are not warranted for commercial applications (unless specified for Commercial use).

LIMITED WARRANTY (Frames and Accessories):



One (1) year

AG28 Cantilever style
AG19/AG19SQ Cantilever styles
Push Button Tilt styles
Quad Pulley Lift – UM8091 style
Umbrella Lights
Umbrella Bases & Accessories
Protective Furniture Covers
Outdoor Rug styles



Three (3) years

Commercial styles – UCP4__ series

Includes: Frame, ribs, finial, tilt, cord, crank handle, housing, canopy and rib pocket seams. If a defect in the original material or workmanship appears during the warranty period on any Treasure Garden product; Treasure Garden, at its option, will repair or replace the product without charge.

Authorized Retailer:

Requests for returns must be FAXED in to (888) 821-8868
Attn.: Customer Service or contact a Customer Service Rep.

LIMITED WARRANTY Fabric (Furniture Grade):

The following fabric lines have a limited warranty against fading for:
5 years - Sunbrella®/Outdura®/Bella-Dura®/Docril®
4 years - O'bravia®

What is NOT Covered:

Failure caused by unreasonable or abusive use, or failure caused by neglect of reasonable and necessary care are not covered by this warranty.

Additionally, acts of nature (including but not limited to wind, hurricanes, tornadoes, and storms) are not covered by this warranty. This warranty covers return freight of any warranted product only for the first year. This warranty gives you specific legal rights and you may have other rights which vary from state to state.

Wind Damage:

Treasure Garden highly recommends that no umbrella, regardless of size or weight, ever be left unattended in the open position. In windy conditions, it is further recommended that umbrellas be closed, removed from their base, and stored, or laid horizontally. This will reduce the risk of damage to your umbrella, furniture, and other belongings or property. To ensure stability of your umbrella, please observe proper placement, and use sufficient weight (base). This catalog contains minimum recommendations for necessary weight; but this can vary, depending on the conditions in your particular area.

WIND DAMAGE IS NOT COVERED UNDER OUR LIMITED WARRANTY.

Irregularities in Production Process:

The possibility of "Irregularities" in the product surface may occur during the production process. However, these irregularities do not reduce the quality of the product. Treasure Garden monitors every stage of production to ensure a clean and consistent appearance on every part.

Rust:

Rust is a natural part of the aging process of all Steel or Iron based materials and is therefore NOT considered a defect. Treasure Garden Cast Iron & Steel plate bases are designed to require minimum maintenance. Bases should be kept clean.

Do not let dirt build up on the bases. Cleaning with mild soap and water, and seasonal touch-up of any scratches, chips or occasional rust seepage from crevices or hidden, un-finishable surfaces inherent in some designs is all that is required. Touch Up paint in matching frame colors are available through your retail dealer. Never leave bases standing in water. To keep your bases looking their best, you may wish to store them when not in use for an extended period of time.

**NO RETURNS ON CUSTOM OR
DESIGNER COVER STYLE UMBRELLAS.**

**THE SELLER DISCLAIMS ANY IMPLIED WARRANTY
OF MERCHANTABILITY.**



KINGSTON CASUAL WARRANTY INFORMATION

RESIDENTIAL 7: 3: 1 YEAR LIMITED WARRANTY

- **Kingston Casual Furniture (KCF)** is pleased to offer a 7-year residential limited warranty on the structure of our furniture. This permits our customers to purchase Kingston Casual Furniture (when purchased from an authorized KCF retailer) with the assurance that it will endure for many years to come, in a residential setting.
- **KCF** warrants to the original owner that the Aluminum furniture is free from Manufacturer defects in material and workmanship. The structural **frame** warranty is for a period of **7 years** from the date of the original purchase. **The powder coat paint finish** warranty lasts for **3 years, against peeling or blistering**, from the date of the original purchase, and **1 year against significant fading**. **Please Note: Hand Painted Frame Finishes are unique and are not covered under this warranty for any reason.**
- **KCF** warranties **all fabrics (unless fabric maker offers a longer warranty (i.e. Sunbrella-5 years; Evertru-5 years; Performatex-3 years, cushion fill materials, concrete, stone, table tops, fire pits, gazebos, accessories and parts, for a period of 1 year** from the original purchase date.
- **KCF** warranties its Wicker for a period of 3 years against Manufacturer defects from original purchase date.
- **KCF** warranties its Teak and Eucalyptus Wood for a period of 3 years and Acacia wood for a period of 1 year against Manufacturer defects from original date of purchase. See exclusions below
- **Coverage Details:** If the furniture frame fails structurally, or if the finish cracks, peels or blisters, **KCF** will, at its discretion, repair, or replace the frame in the original style and finish whenever possible. However, if the frame or part is no longer available, **KCF** will substitute product of equal value in a similar style or finish. **KCF** will pay the freight/shipping costs of replaced product in North America and Canada for a period of 1 year from the date of original purchase.
- **What is not covered:** **KCF** does not warranty damages if they occur from improper handling, unreasonable or customer abuse, acts of nature, or God, or normal wear and tear, or fading of frame, vinyl, or fabrics including stretching. Damage caused by harsh chemicals, sun screen and tanning lotions, freezing, mildew/mold, staining, wind, rain, sun, hail, table top breakage, zippers, chair or table glides. All wood products will naturally patina if left untreated and slight checking and cracks in the wood are to be expected. This warranty does not cover the natural aging of the wood. Certain fabrics (i.e. Sunbrella) come with a separate manufacturer's warranty. The consumer should contact them directly with any claims against their warranty. All other express or implied warranties, including the warranties of merchantability and fitness for a particular purpose are expressly disclaimed.
- **Care Instructions:** Please visit our website at KingstonCasual.com for care and maintenance tips.
- **Claim Contact Information:** Please email all claims to Support@KingstonCasual.com or call (256) 325-0544

PERFECT CHOICE WARRANTY INFORMATION

Perfect Choice Furniture (hereinafter "PERFECT CHOICE") warranties to the original purchaser ("Purchaser") that, for a period of twenty (20) years (except as specified below) of residential use from the date of purchase, under normal use and service conditions, PERFECT CHOICE furniture shall be free from material defects, and shall not splinter, crack, chip, peel, or rot, or suffer structural damage from insect infestation.

METAL FRAMES

Welds and joints are warranted to not break or crack for five (5) years of residential use. Powder coat finish is warranted to not peel for five (5) years of residential use.

HARDWARE

Hardware used in production or assembly of PERFECT CHOICE furniture is warranted to not break for five (5) years of residential use.

CUSHIONS & PILLOWS

Cushions and pillows are warranted to be free from workmanship or material defects for thirty (30) days from purchase. The fabric on a cushion, pillow, or umbrella canopy is warranted to not tear, mildew, or fade excessively for one (1) year from purchase.

FIRE PIT TABLE COMPONENTS

The fire components used in fire pit tables, including burners, ignitions, electronics, and glass guards, are not covered under the PERFECT CHOICE warranty.

EXCLUSIONS

The following items are specifically excluded from the PERFECT CHOICE limited residential warranty. PERFECT CHOICE shall not be liable for any failure, defect or damage resulting from or connected with the following:

- Fading, color change or color match — PERFECT CHOICE lumber is made with UV-stabilizers to minimize fading; however, upon exposure to the sun, all colors will fade to some degree. To minimize possible fading: keep product covered, utilize cushions where applicable, minimize direct sunlight by storing product when not in use, or use a UV-protectant
- Color or pattern variance between any new replacement section or pieces and other sections or pieces
- Rust or corrosion of stainless steel or zinc coated steel hardware (please see Cleaning/Maintenance information for details on how to maintain your hardware)
- Rust or corrosion of steel frames
- Assembly or handling of products after they leave our factory, including any lack of performance or improper performance in any way by the dealer or assembler.
- Abnormal use of products
- Improper use of products with fire components, such as lighting a Crystal Fire burner without using the glass guard
- The application of paint, varnish or other coating or chemical not approved by PERFECT CHOICE or the application of heat or radiation from an external source, such as a barbecue grill, another appliance, fire or reflection from windows or doors
- Any lack of compatibility between our products and any other product not manufactured by us that causes damage to or failure of our products
- Post-delivery labor, transportation or assembly costs
- Damage caused by, among other things, use of incompatible accessories, intentional acts, unreasonable use, misuse, physical abuse, permanent deformation or destruction by human or animal,

PERFECT CHOICE WARRANTY INFORMATION CONTINUED

vandalism, riot, insurrection or civil disorder, accidents or corrosive atmospheres (such as those contaminated by acid rain, harmful chemicals or vapors), or any act of God (such as fire, flooding, hurricane, earthquake, tornado, lightning, ice, etc.), environmental condition (such as air pollution, mold, mildew, etc.), staining from foreign substances (such as dirt, grease, oil, etc.), or normal weathering (defined as exposure to sunlight, weather and atmosphere which may cause any colored surface to gradually fade, darken, chalk, or accumulate dirt or stains)

- Assembly of hardware, accessory items, or defects caused by their assembly

We reserve the right to discontinue or modify any product line or color without notifying the Purchaser. If the original product is not available, we retain the right to choose to provide replacement material of equal value or quality. No person or entity is authorized by PERFECT CHOICE to make and PERFECT CHOICE shall not be bound by any statement or representation as to the quality or performance of PERFECT CHOICE products other than as contained in this warranty.

This warranty may not be altered or amended except in a written instrument signed by PERFECT CHOICE and Purchaser. Under no circumstances will PERFECT CHOICE be liable for special, incidental or consequential damages, whether such damages are sought in contract, in tort (including but not limited to negligence and strict liability) or otherwise, and PERFECT CHOICE's liability with respect to defective products shall in no event exceed the replacement of such products or return of the purchase price, as described above. Some states do not allow the exclusions or limitations of incidental or consequential damages, so the above limitations or exclusions may not apply to you.

This warranty gives you specific legal rights, and you may also have other rights that vary from state to state. This warranty shall only be applicable and enforceable in the United States of America and Canada. Proper maintenance of your product is required to support the benefits of this warranty. This warranty is voided in the event that there are indications of abuse or neglect to the furniture. This warranty does not apply to normal wear and tear effects on PERFECT CHOICE products, which are received by regular use of the products.

This warranty is effective for products purchased on or after 1/1/2019. For warranty information for PERFECT CHOICE products purchased prior to 1/1/2019, please contact the PERFECT CHOICE Customer Service Team.

Earl May's Guide to

FURNITURE & ACCESSORIES



STORE COPY

